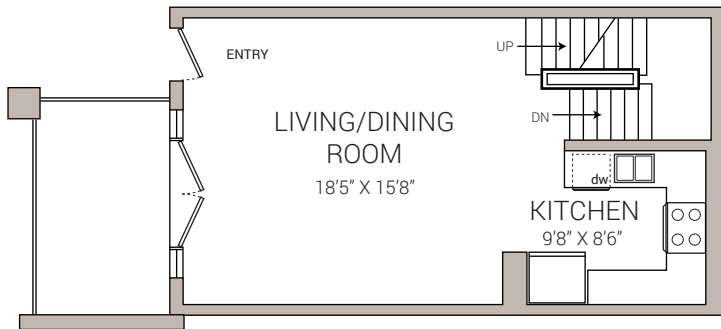
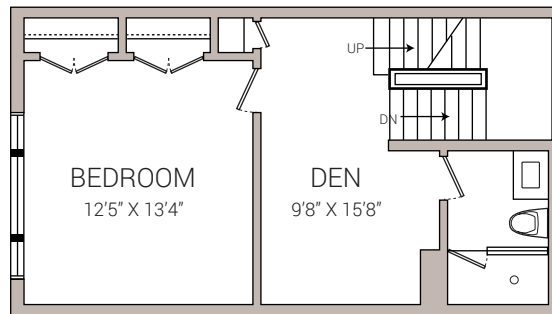


1D GIVINS STREET  
2 BEDROOM + DEN

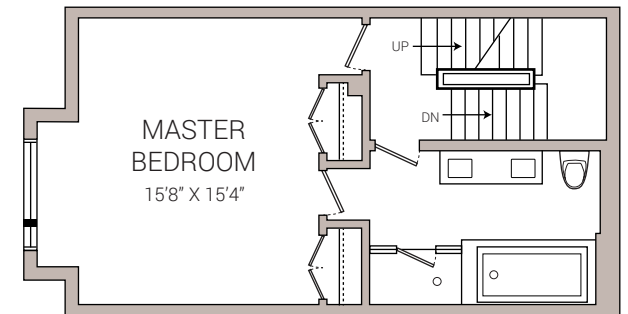
APPROX. 2141 SQ.FT. + 358 SQ.FT. ROOFTOP TERRACE + 77 SQ.FT. PATIO



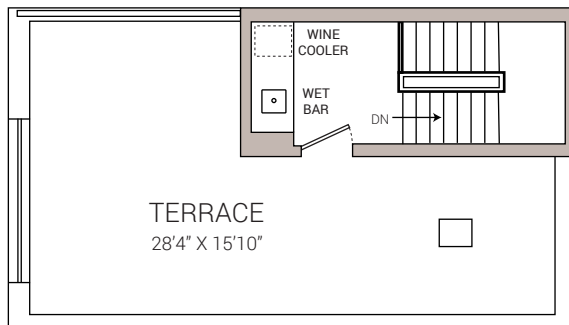
MAIN FLOOR



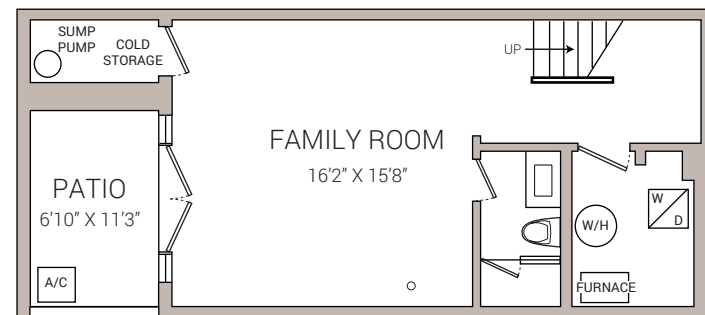
SECOND FLOOR



THIRD FLOOR



ROOF-TOP TERRACE



BASEMENT

