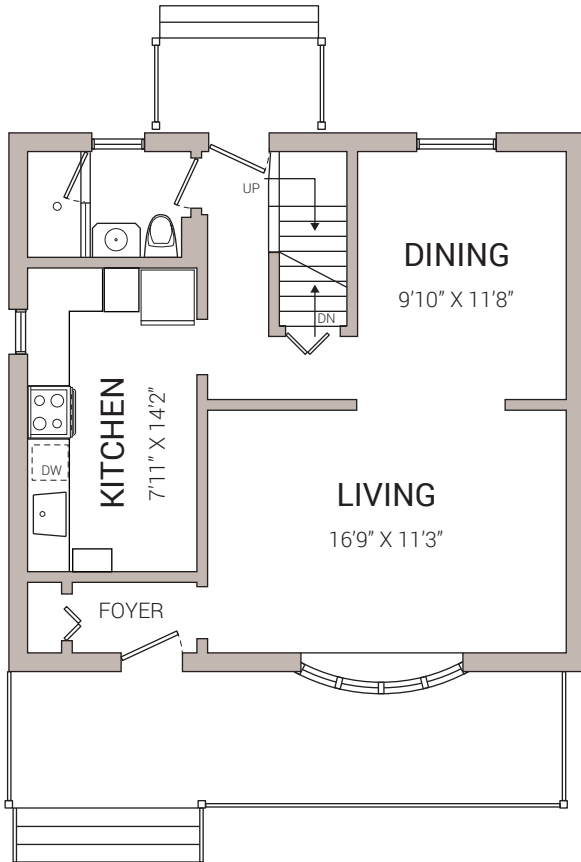
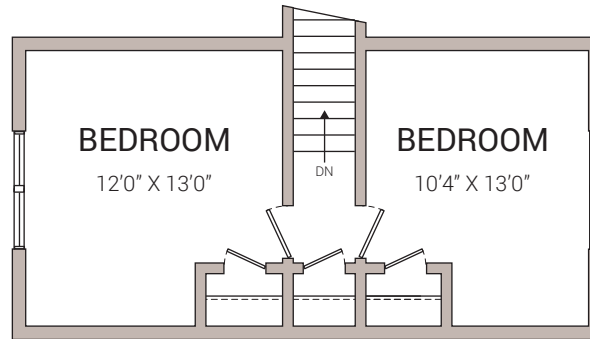


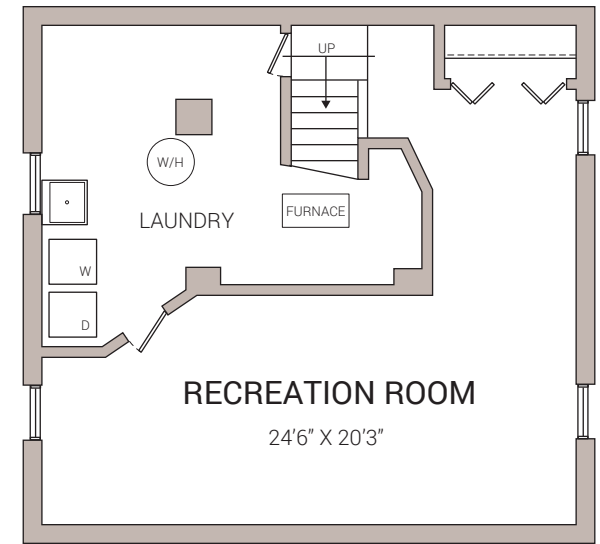
72 ALLENBY AVENUE
 TWO BEDROOM
 1032 SQ.FT. + 669 SQ.FT FINISHED BASEMENT



MAIN LEVEL



SECOND FLOOR



BASEMENT

POPE REAL ESTATE LIMITED, BROKERAGE

OFFICE / 416.479.0712 FAX / 416.479.0713

7B GILEAD PLACE TORONTO ON M5A 3C8 POPEREALSTATE.CA

DISCLAIMER: POPE REAL ESTATE LIMITED HAS NOT MEASURED THE SUBJECT PROPERTY AND MAKES NO REPRESENTATIONS AS TO THE ACCURACY OF ANY OF THE MEASUREMENTS PROVIDED. THE MEASUREMENTS ARE ESTIMATES AND MUST NOT BE RELIED UPON. EXACT MEASUREMENTS CAN BE OBTAINED BY RETAINING THE SERVICES OF A PROFESSIONAL ARCHITECT OR ENGINEER.