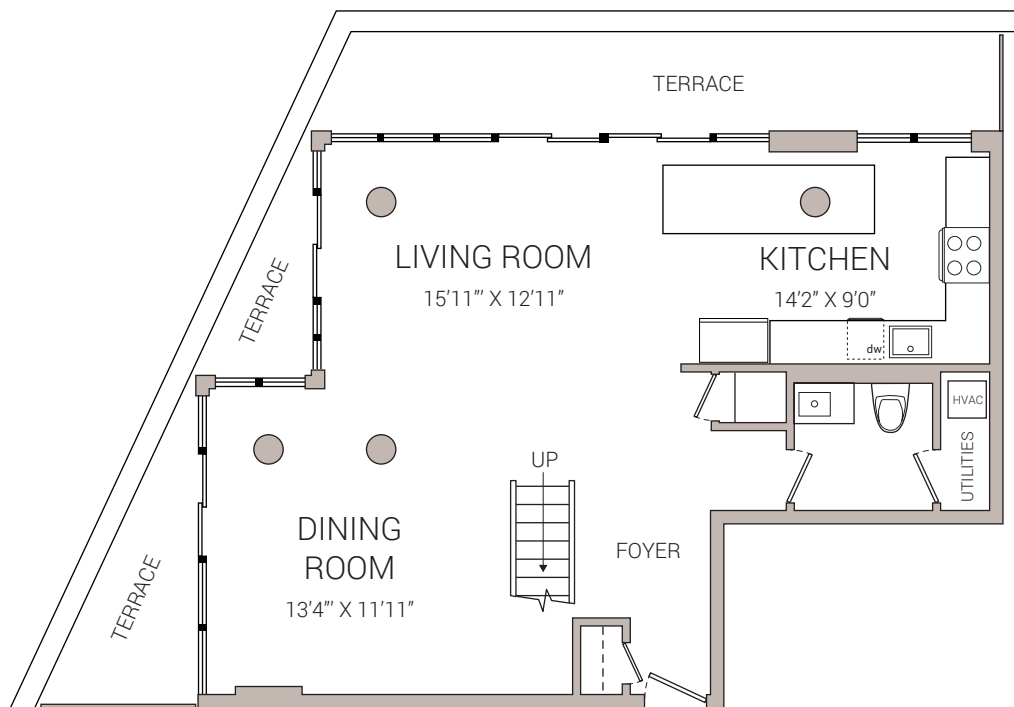
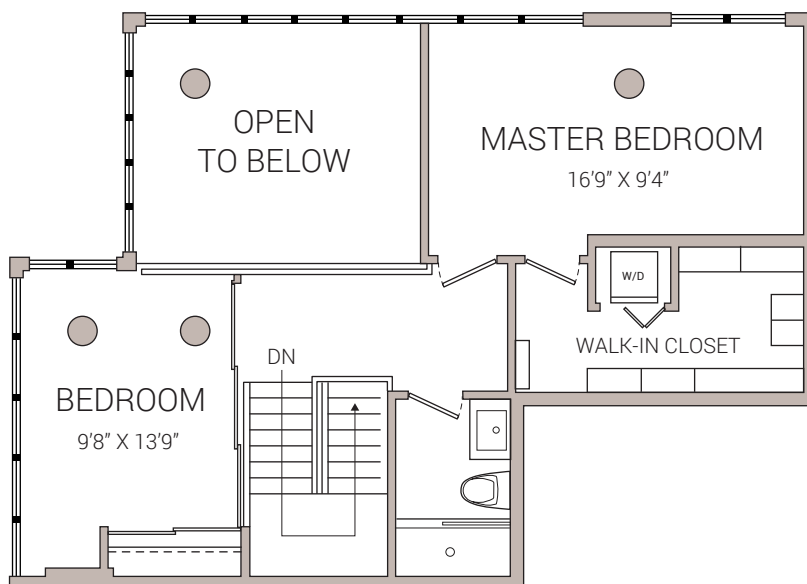




508 - 369 SORAUREN AVENUE  
TWO BEDROOM  
APPROX. 1434 SQ.FT + 296 SQ.FT TERRACE



MAIN FLOOR 790 SQ.FT



SECOND FLOOR 644 SQ.FT

**POPE REAL ESTATE LIMITED, BROKERAGE**  
OFFICE / 416.479.0712 FAX / 416.479.0713  
7B GILEAD PLACE TORONTO ON M5A 3C8 POPEREAL ESTATE.CA

DISCLAIMER: POPE REAL ESTATE LIMITED HAS NOT MEASURED THE SUBJECT PROPERTY AND MAKES NO REPRESENTATIONS AS TO THE ACCURACY OF ANY OF THE MEASUREMENTS PROVIDED. THE MEASUREMENTS ARE ESTIMATES AND MUST NOT BE RELIED UPON. EXACT MEASUREMENTS CAN BE OBTAINED BY RETAINING THE SERVICES OF A PROFESSIONAL ARCHITECT OR ENGINEER.