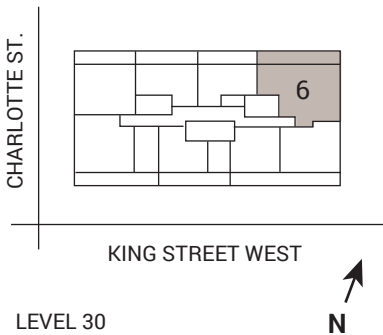
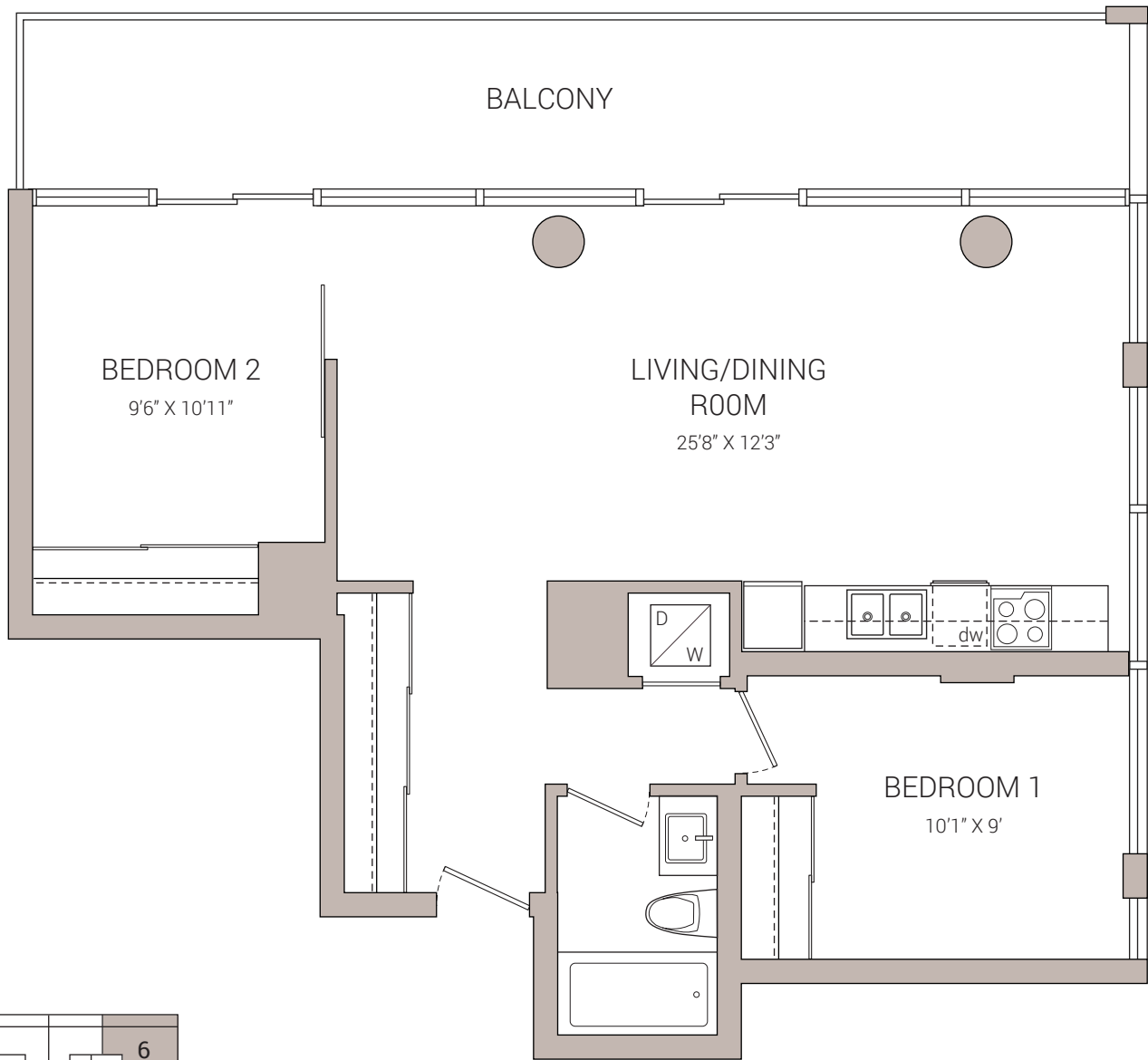




3006 - 11 CHARLOTTE STREET
TWO BEDROOM
APPROX. 824 SQ.FT. + 196 SQ.FT. BALCONY



POPE REAL ESTATE LIMITED, BROKERAGE
OFFICE / 416.479.0712 FAX / 416.479.0713
7B GILEAD PLACE TORONTO ON M5A 3C8 POPEREAL ESTATE.CA

DISCLAIMER: POPE REAL ESTATE LIMITED HAS NOT MEASURED THE SUBJECT PROPERTY AND MAKES NO REPRESENTATIONS AS TO THE ACCURACY OF ANY OF THE MEASUREMENTS PROVIDED. THE MEASUREMENTS ARE ESTIMATES AND MUST NOT BE RELIED UPON. EXACT MEASUREMENTS CAN BE OBTAINED BY RETAINING THE SERVICES OF A PROFESSIONAL ARCHITECT OR ENGINEER.