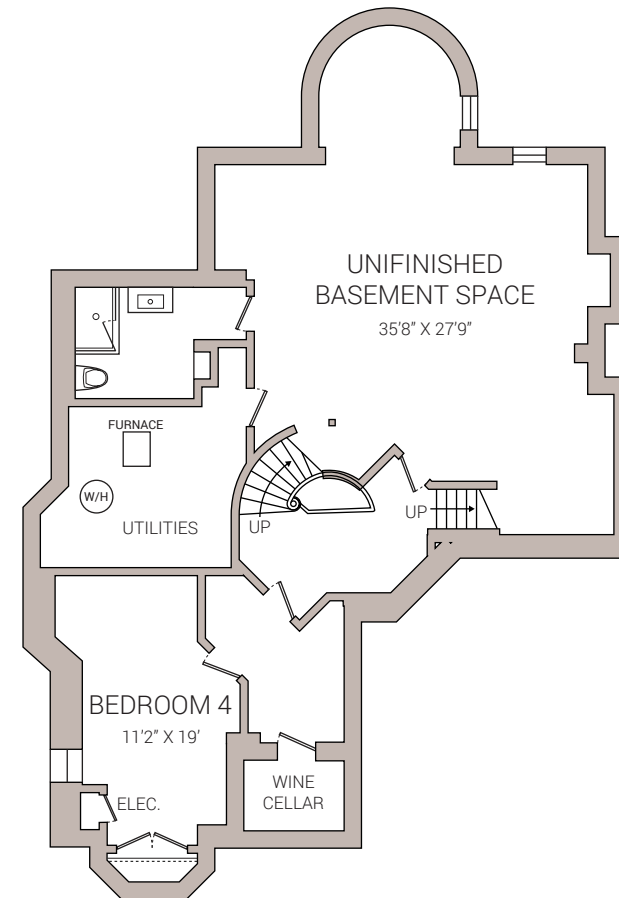
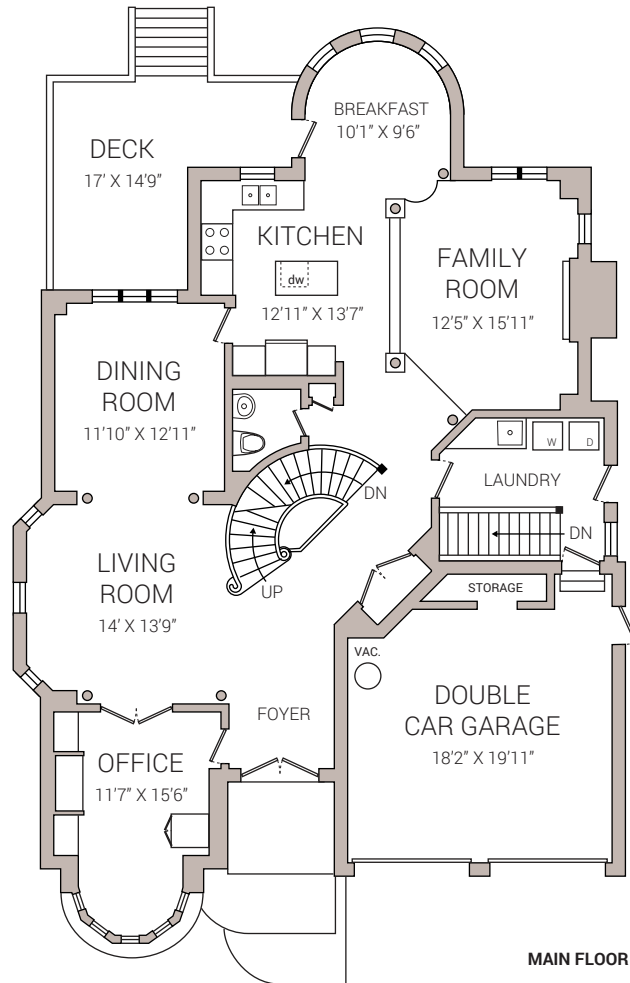


103 CRESANE STREET
 5 BEDROOM & 5 BATHS
 APPROX. 2968 SQ.FT. + 1598 SQ.FT. PARTIALLY FINISHED BASEMENT



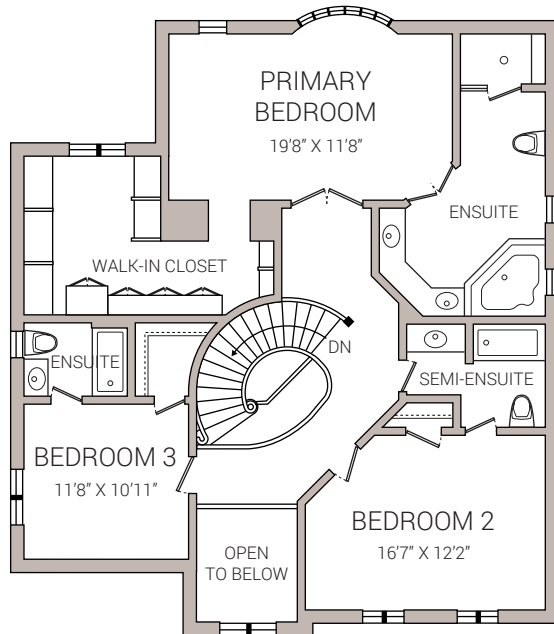
POPE REAL ESTATE LIMITED, BROKERAGE

OFFICE / 416.479.0712 FAX / 416.479.0713

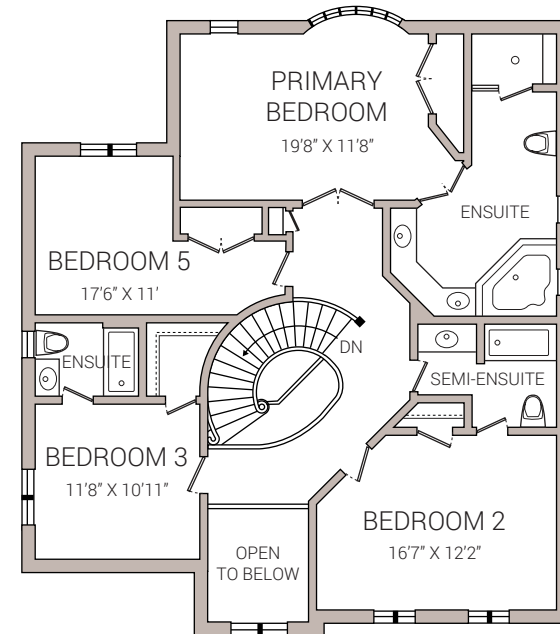
7B GILEAD PLACE TORONTO ON M5A 3C8 POPEREAL ESTATE.CA

DISCLAIMER: POPE REAL ESTATE LIMITED HAS NOT MEASURED THE SUBJECT PROPERTY AND MAKES NO REPRESENTATIONS AS TO THE ACCURACY OF ANY OF THE MEASUREMENTS PROVIDED. THE MEASUREMENTS ARE ESTIMATES AND MUST NOT BE RELIED UPON. EXACT MEASUREMENTS CAN BE OBTAINED BY RETAINING THE SERVICES OF A PROFESSIONAL ARCHITECT OR ENGINEER.

103 CRESANE STREET
 5 BEDROOM & 5 BATHS
 APPROX. 2968 SQ.FT. + 1598 SQ.FT. PARTIALLY FINISHED BASEMENT



SECOND FLOOR



SECOND FLOOR ALTERNATIVE LAYOUT