

B635

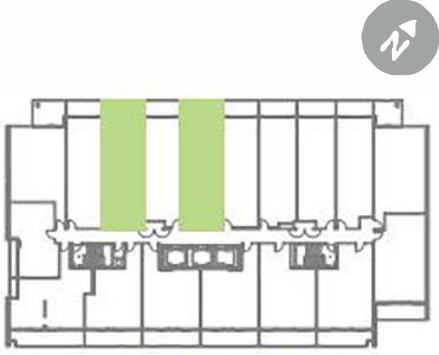
1 Bedroom

Interior 635 Sq.Ft.

Exterior 88 Sq.Ft.

Total 723 Sq.Ft.

1108-330 Richmond Street West is the mirror plan of this plan



TOWER SERIES
9' CEILING • FLOOR 3, 5 - 11

Dimensions, specifications, location of radiators and fixtures, the floor plan and a detailed ceiling (including window size and location and door size, location and swing) are approximate only and are subject to change or modification, without notice. Actual floor space varies from illustrated area. Orientation of suite may be reversed and Purchaser agrees to accept same. Balcony, terrace and patio are to be used for decorative purposes only and location and size are subject to change without notice. All illustrations are a list of concept only. The parameters of Schedule "C" of this Agreement, and all Sections and 30 apply to this Schedule E & D.E.