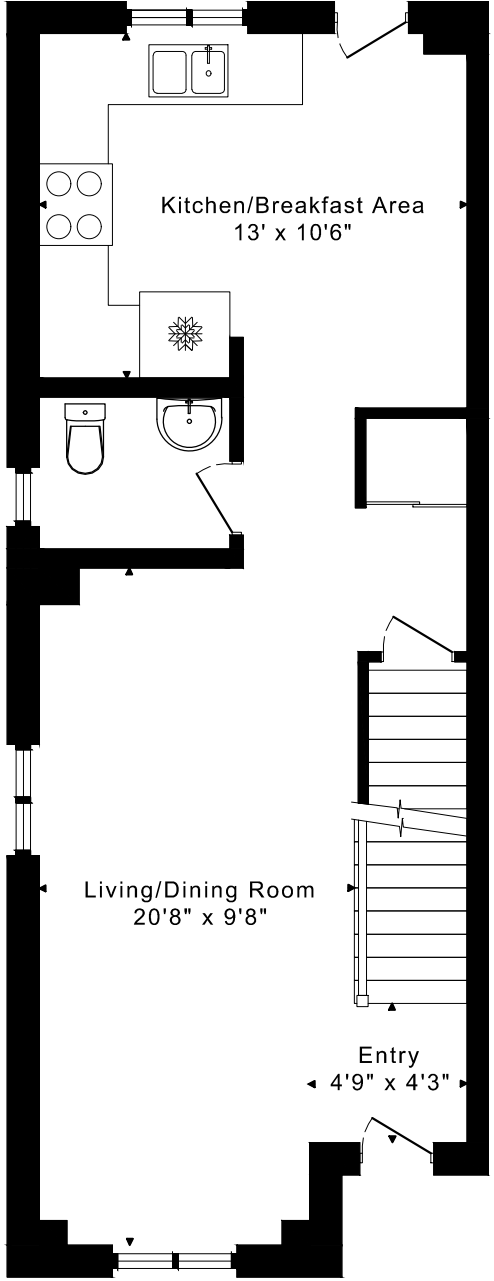
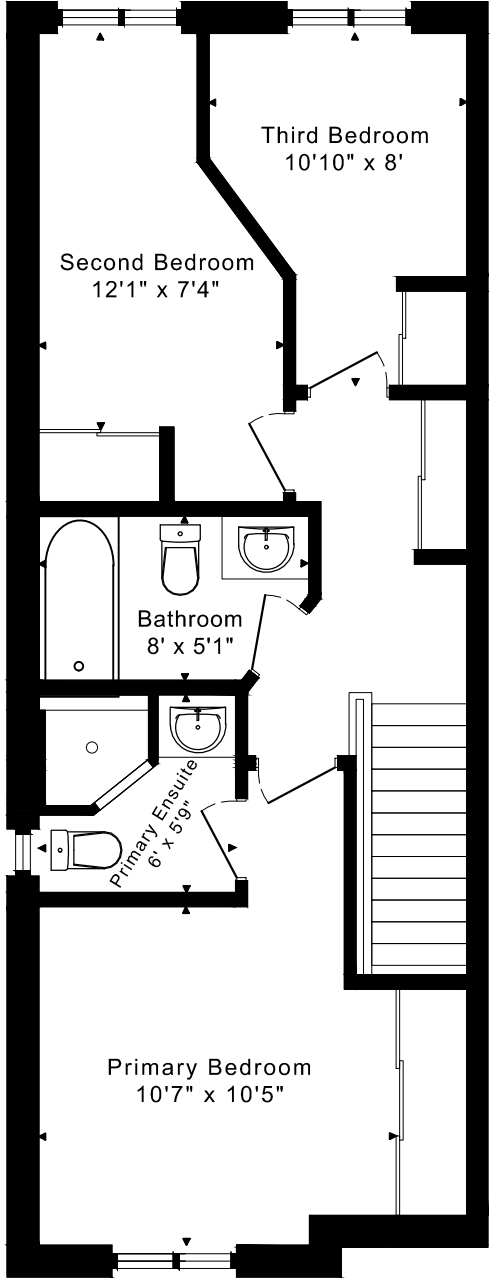


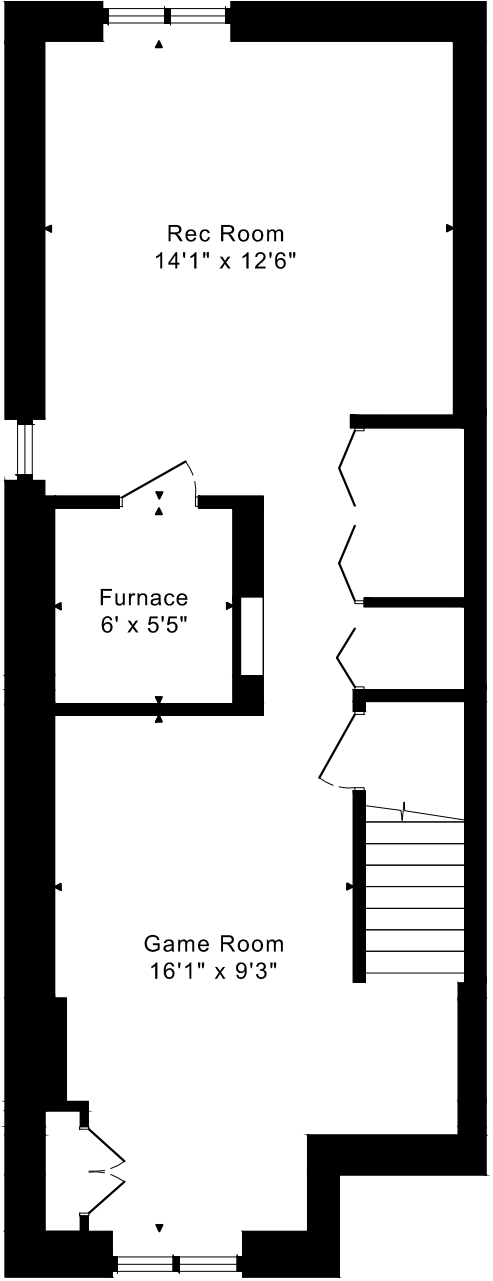
127 BRICKWORKS LANE
FLOOR PLANS



MAIN FLOOR
565 SQUARE FEET



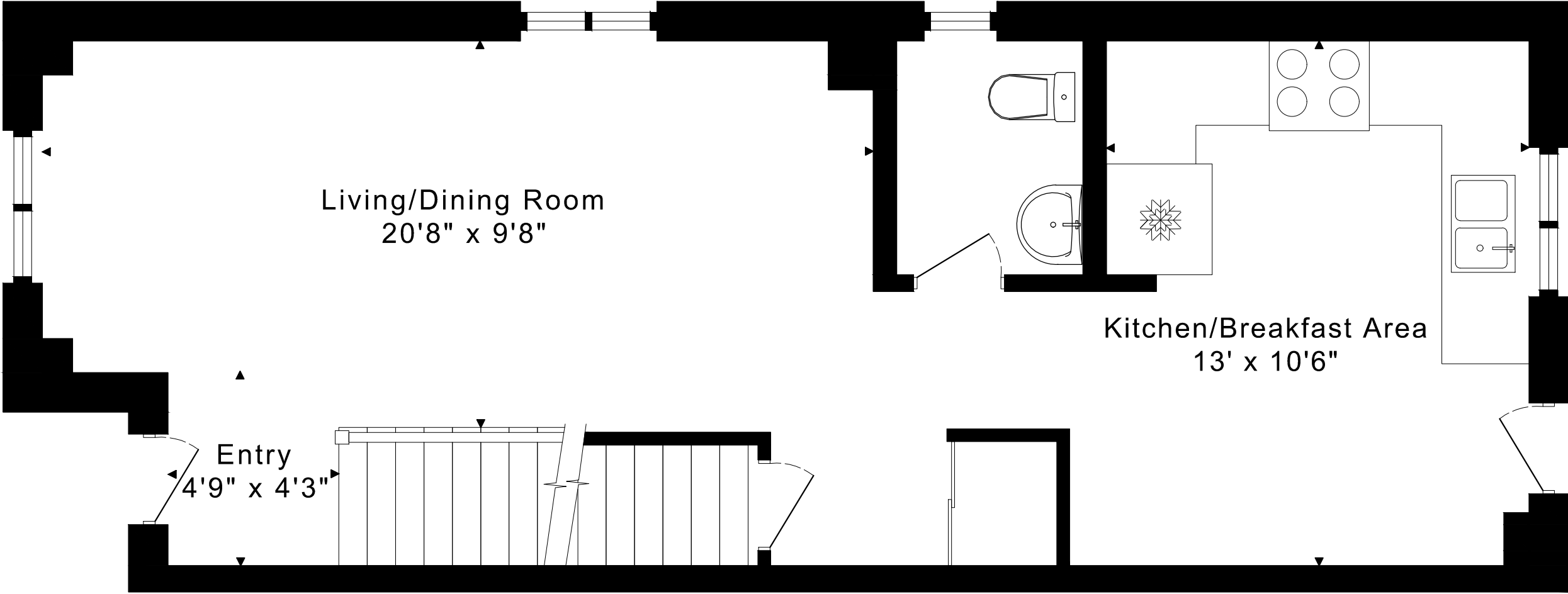
SECOND FLOOR
570 SQUARE FEET



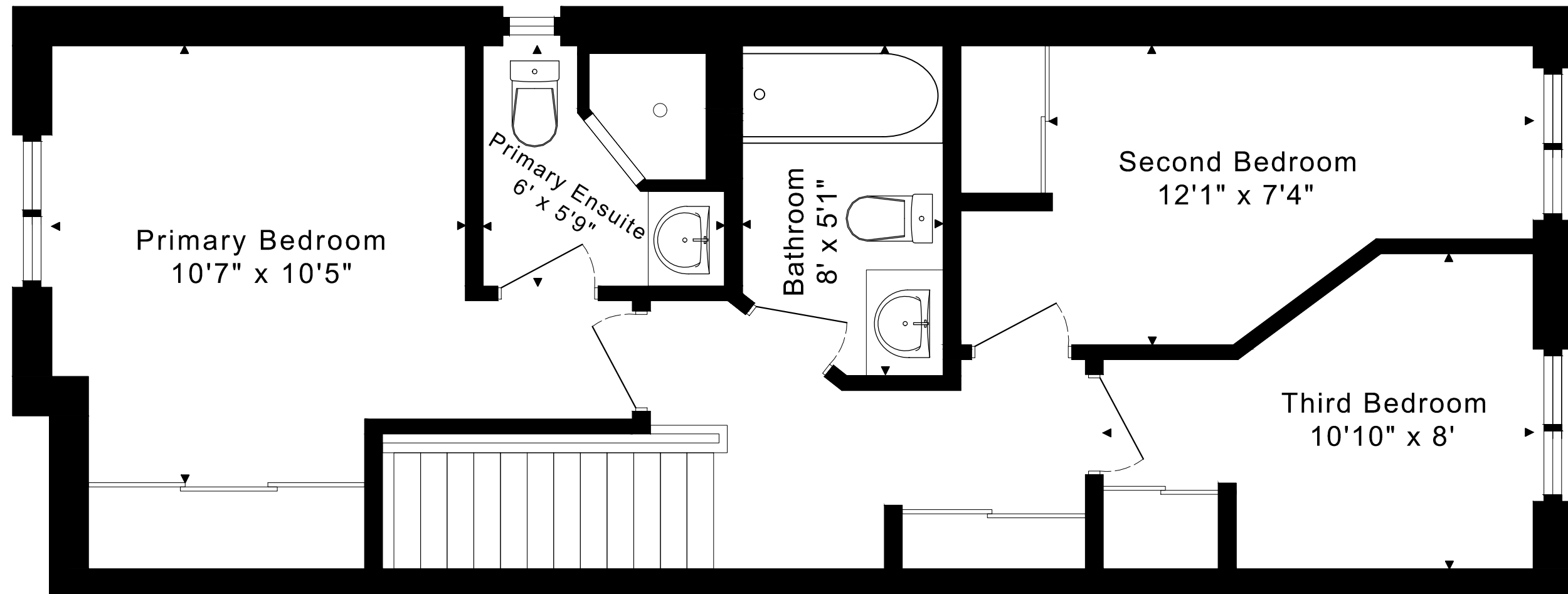
LOWER FLOOR
565 SQUARE FEET

1135 sq ft + 565 sq ft
BELOW GRADE

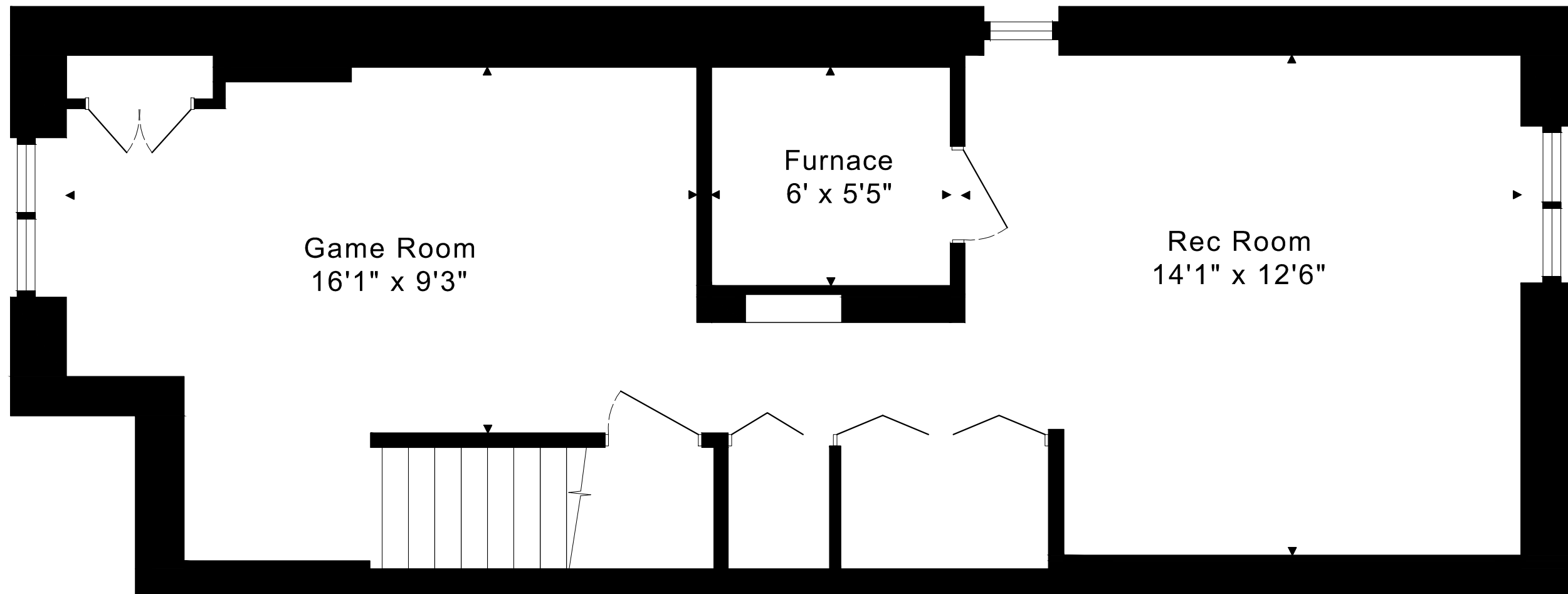
127 BRICKWORKS LANE
FLOOR PLANS
MAIN FLOOR 565 SQUARE FEET



127 BRICKWORKS LANE
FLOOR PLANS
SECOND FLOOR 570 SQUARE FEET



127 BRICKWORKS LANE
FLOOR PLANS
LOWER FLOOR 565 SQUARE FEET



127 BRICKWORKS LANE ROOM MEASUREMENTS

Floor	Room	Imperial				Metric [m]	
		Length		Width		Length	Width
		Feet	Inches	Feet	Inches		
Second	Primary Bedroom	10	7	10	5	3,23	3,18
	Primary Ensuite	6	0	5	9	1,83	1,75
	Second Bedroom	12	1	7	4	3,68	2,24
	Third Bedroom	10	10	8	0	3,30	2,44
	Bathroom	8	0	5	1	2,44	1,55
Main	Entry	4	9	4	3	1,45	1,30
	Living/Dining Room	20	8	9	8	6,30	2,95
	Kitchen/Breakfast Area	13	0	10	6	3,96	3,20
Lower	Rec Room	14	1	12	6	4,29	3,81
	Game Room	16	1	9	3	4,90	2,82
	Furnace	6	0	5	5	1,83	1,65

CAPTURED ON: 21 AUG 2023
DIMENSIONS ARE APPROXIMATE AND SHOULD BE CONSIDERED
ILLUSTRATIVE ONLY.

1135 sq ft + 565 sq ft
BELOW GRADE

The following is a disclaimer regarding the approximate nature of dimensions and floor areas listed in this document:

Disclaimer:

The dimensions and floor areas listed in this document are provided as an estimate only and are intended to be used for illustration purposes only. These measurements are not necessarily meant to be a perfect representation of the actual space.

Notes regarding measurement methods and accuracy:

The utilization of laser measurement technology during the 3D model capturing process at the location provides an accurate representation of floor plans, with a typical margin of error of 3-5%. For the most accurate and official measurement data, it is advised to consult official documents such as MPAC records, builder's pre-construction plans, or data from certified measurement companies.

Exterior wall thickness is included in the calculation of the overall square footage and is considered as a component of the footprint. The wall thickness measurement is obtained onsite whenever possible, or estimated in the event where obtaining onsite measurements is not possible, such as in the case of condominium buildings where wall thickness may vary throughout the building.