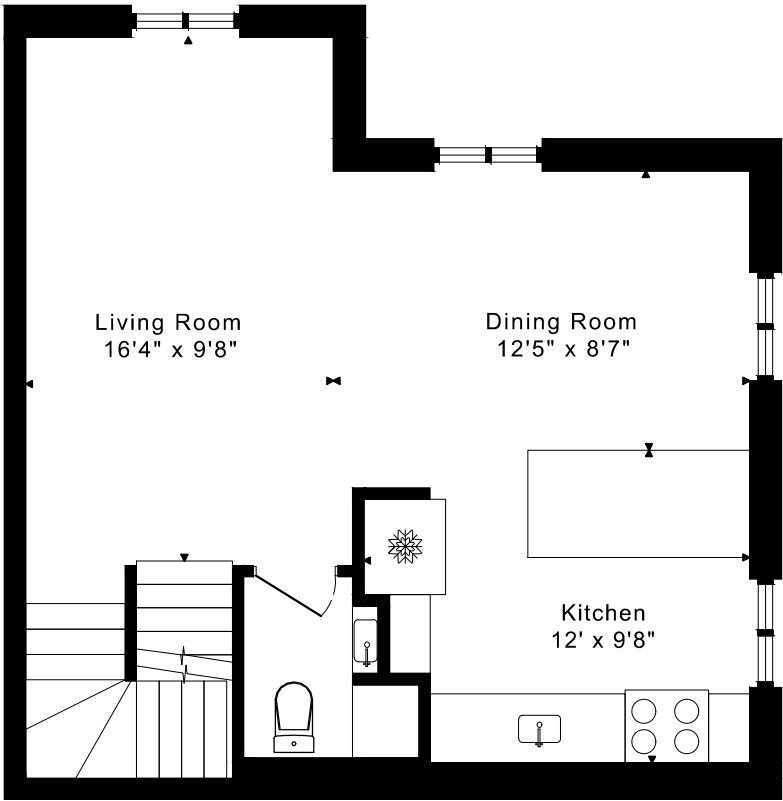
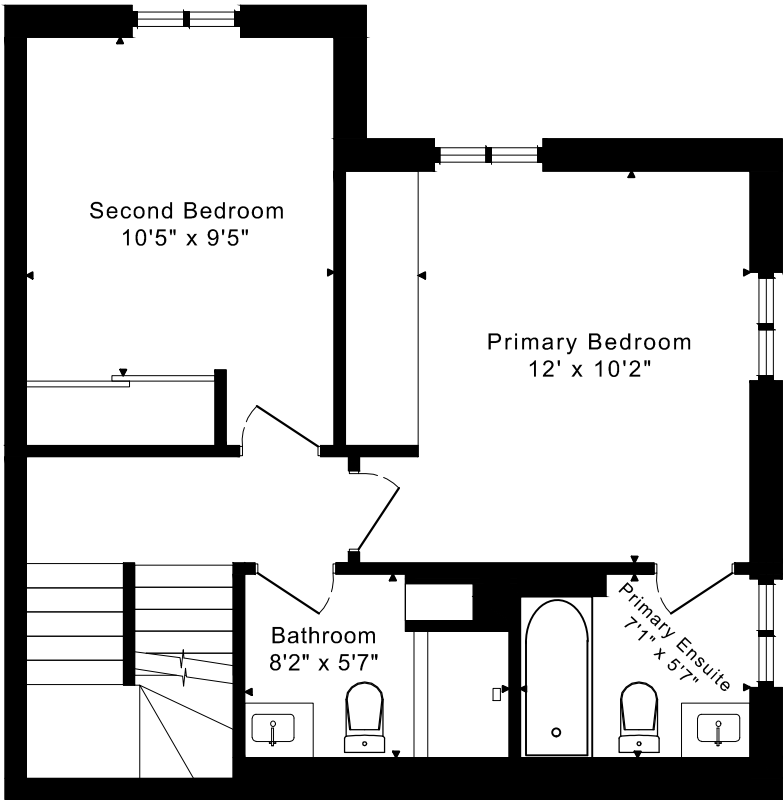


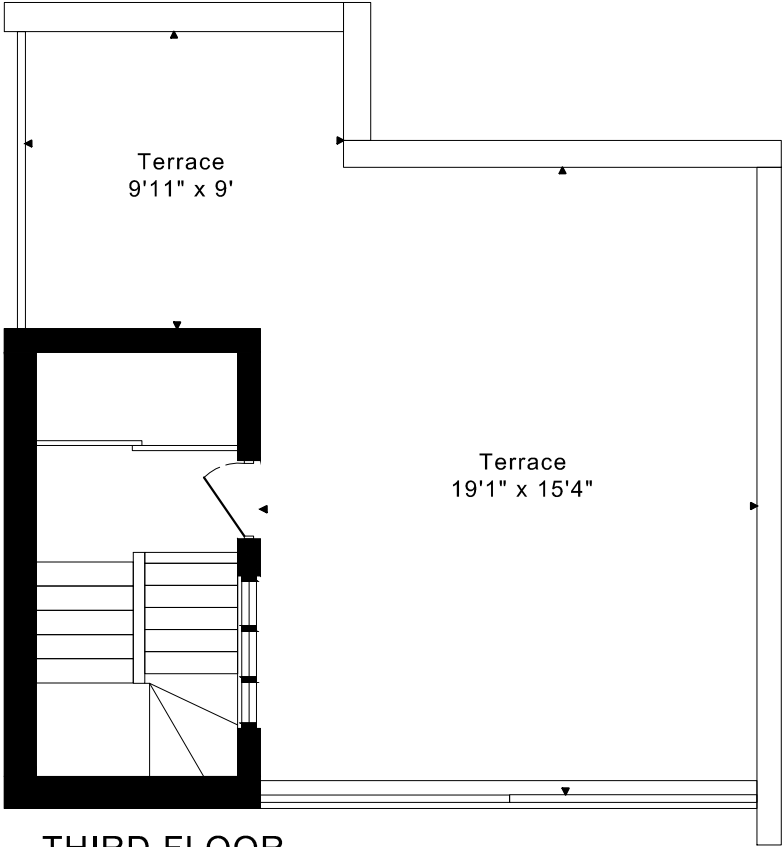
46 WESTERN BATTERY UNIT 824
FLOOR PLANS



MAIN FLOOR
530 SQUARE FEET



SECOND FLOOR
530 SQUARE FEET

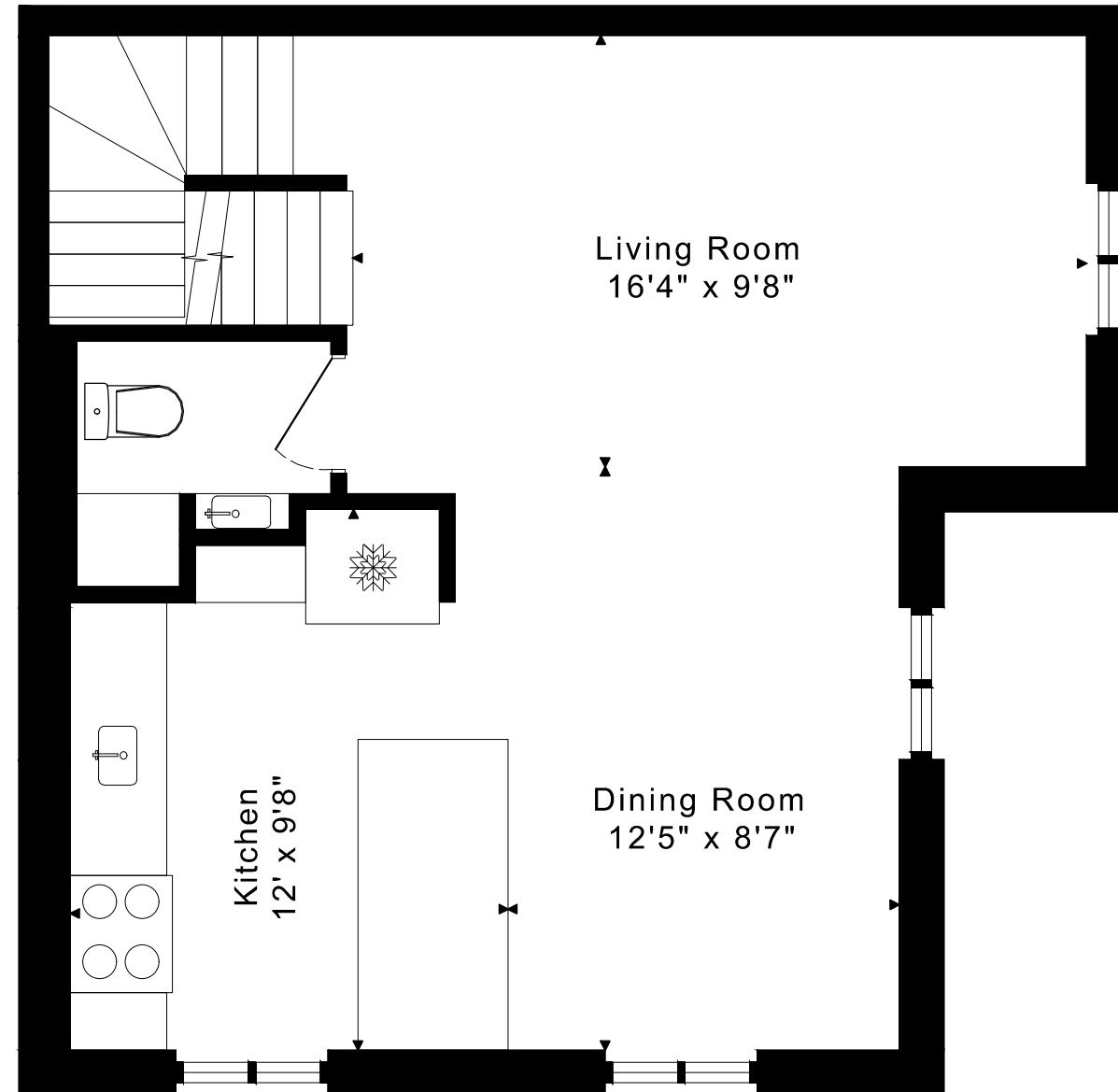


THIRD FLOOR
115 SQUARE FEET

1175 sq ft

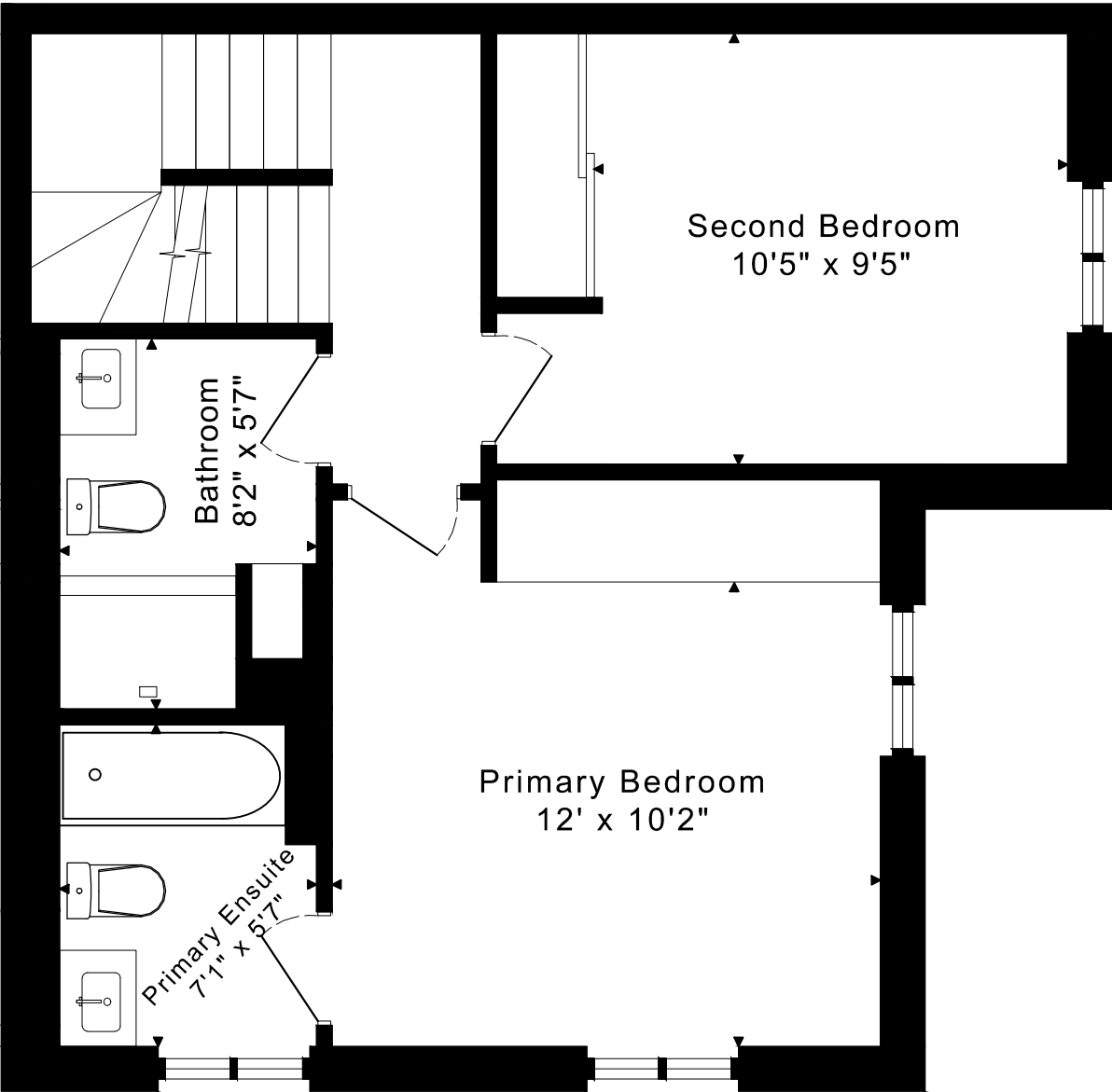
46 WESTERN BATTERY UNIT 824 FLOOR PLANS

MAIN FLOOR 530 SQUARE FEET



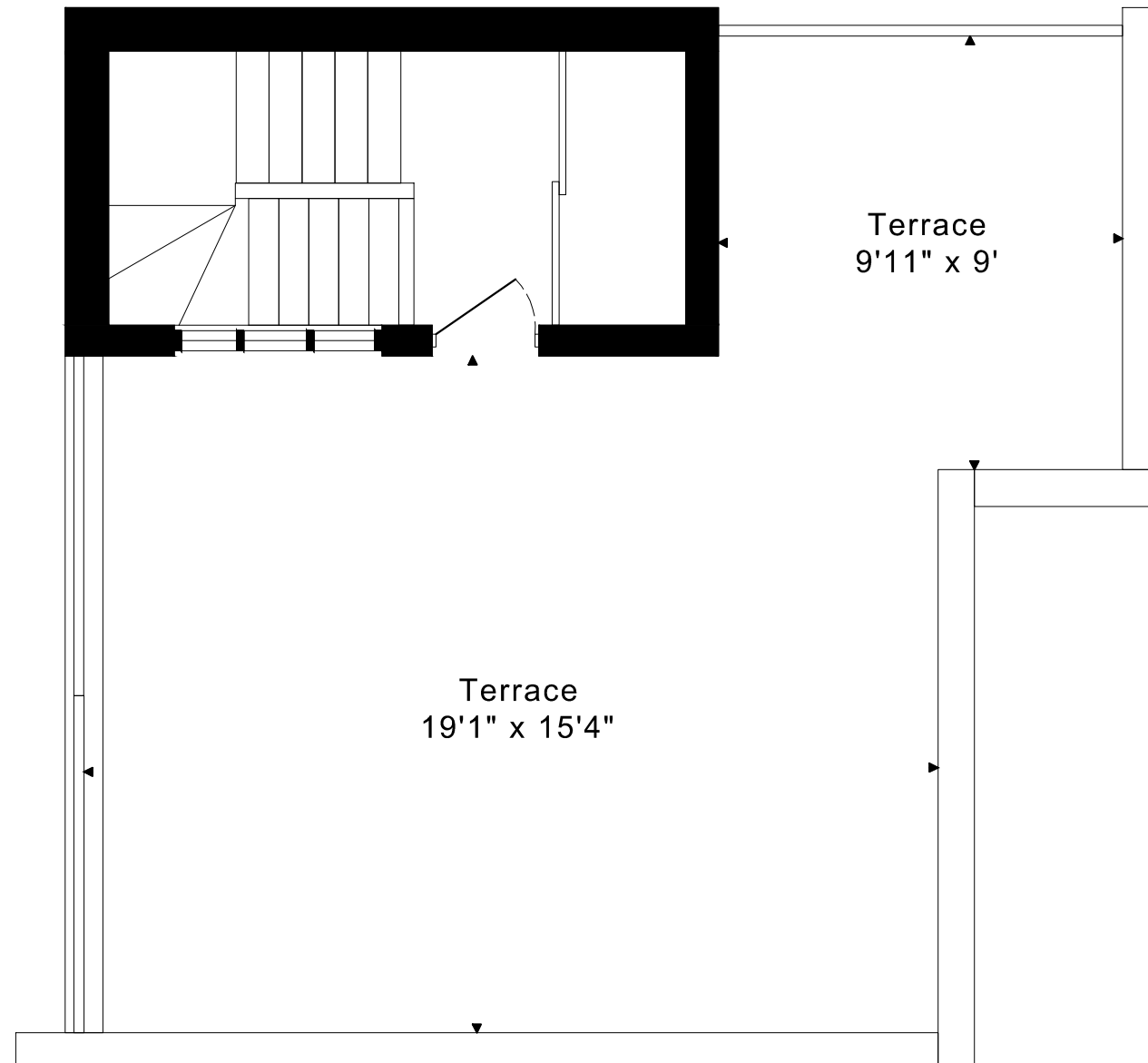
46 WESTERN BATTERY UNIT 824
FLOOR PLANS

SECOND FLOOR 530 SQUARE FEET



46 WESTERN BATTERY UNIT 824 FLOOR PLANS

THIRD FLOOR 115 SQUARE FEET



46 WESTERN BATTERY UNIT 824 ROOM MEASUREMENTS

Floor	Room	Imperial				Metric [m]	
		Length		Width		Length	Width
		Feet	Inches	Feet	Inches		
Third	Terrace	19	1	15	4	5,82	4,67
	Terrace	9	11	9	0	3,02	2,74
Second	Primary Bedroom	12	0	10	2	3,66	3,10
	Primary Ensuite	7	1	5	7	2,16	1,70
	Second Bedroom	10	5	9	5	3,18	2,87
	Bathroom	8	2	5	7	2,49	1,70
Main	Living Room	16	4	9	8	4,98	2,95
	Dining Room	12	5	8	7	3,78	2,62
	Kitchen	12	0	9	8	3,66	2,95

CAPTURED ON: 25 OCT 2023
DIMENSIONS ARE APPROXIMATE AND SHOULD BE CONSIDERED
ILLUSTRATIVE ONLY.

1175 sq ft

The following is a disclaimer regarding the approximate nature of dimensions and floor areas listed in this document:

Disclaimer:

The dimensions and floor areas listed in this document are provided as an estimate only and are intended to be used for illustration purposes only. These measurements are not necessarily meant to be a perfect representation of the actual space.

Notes regarding measurement methods and accuracy:

The utilization of laser measurement technology during the 3D model capturing process at the location provides an accurate representation of floor plans, with a typical margin of error of 3-5%. For the most accurate and official measurement data, it is advised to consult official documents such as MPAC records, builder's pre-construction plans, or data from certified measurement companies.

Exterior wall thickness is included in the calculation of the overall square footage and is considered as a component of the footprint. The wall thickness measurement is obtained onsite whenever possible, or estimated in the event where obtaining onsite measurements is not possible, such as in the case of condominium buildings where wall thickness may vary throughout the building.